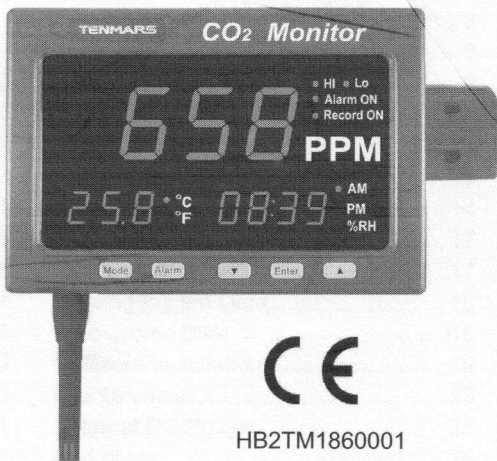


TENMARS

CO₂ Monitor

TM-186/TM-186D

TM-187/TM-187D



CE

HB2TM1860001

TENMARS ELECTRONICS CO., LTD

INDEX

1	PREFACE.....	2
2	CHARACTERISTICS.....	2
3	General Specifications.....	2
4	Electrical Specification.....	4
5	Instrument description	6
6	LED description	7
7	Terminal description.....	8
8	Disable/Enable Display.....	8
9	Mode Set Mode	9
10	Clock and Date setup	9
11	Buzzer ON/OFF Setup	10
12	ADJ SET Setup	11
13	Alarm Set Mode.....	13
14	Alarm Setup.....	14
15	Battery replacement	17
16	Single data memory.....	17
17	Viewing logged Data.....	18
18	Auto Stores Data	18
19	Software installation	19
20	Maintenance	23
21	External DC Power	25
22	End of life	25

1. PREFACE

Thanks for your purchase. Please, read this user guide in details for the first time you operate this CO₂ Monitor.

2. CHARACTERISTICS

- LED display.
- It shows both the value of CO₂, temperature, and humidity.
- The selection of °C or °F.
- Real time data.
- Data Hold function.
- Alarm function.

3. General Specifications

- Display : Double rows LED.
- CO₂ MAX reading : 9999.
- Temp MAX reading : 999.
- Humidity MAX reading : 999.
- CO₂ Sensor : Infrared.
- Temp sensor : Diode.
- Humidity Sensor : Capacitor Sensor.
- Sampling : 1 times/second.

- Power : AC to DC Adapter.
(9~12V/1A).
- Backup Power : 9V battery、NEDA 1604、IEC 6F22 or JIS 006P(Only data logger use).
- Resolution : 1ppm, 0.1%RH, 0.1°C、0.1°F.
- Power : AC to DC Adapter.
(9~12V/1A).
- Backup Power : 9V battery、NEDA 1604、IEC 6F22 or JIS 006P(Only data logger use).
- Resolution : 1ppm, 0.1%RH, 0.1°C, 0.1°F.
- Size : 260x178x47mm (LxWxH) .
- Weight : 1000g.
- Operating Temperature and Humidity :
-20°C ~ +70°C, <95% RH.
(Non-condensing).
- Storage Temperature and Humidity :
-10 to 60°C, <70% RH.
(Non-condensing).
- Consumption Current : ≤700mA.
- Standard Accessories : User's manual,

TENMARS

TM-186/TM-186D
TM-187/TM-187D

9V battery, AC to DC Adapter,
Carrying case, LCD Wall Mount.

- Accessories : Data logging Box.
(Memory Size : 30,000 data sets).
- MINI USB 4P (MALE) to USB A Type
cable.
- Install CD disk.

4. Electrical Specification

Measurement Range:

- CO₂ : 1~9999ppm
- Humidity : 5%~95%.
- Temp : -20.0°C~70.0°C
(-4.0°F~158.0°F).
- CO₂ Accuracy :
±70ppm or ±5% of reading
(0~2000ppm) whichever is greater
Over 2000ppm ±7%
- Temp Accuracy :
±1.0°C/±1.8°F (0.0°C ~40.0°C /32°F
~104°F) ; other ±2.0°C /3.6°F.

TENMARS

TM-186/TM-186D
TM-187/TM-187D

- Humidity Accuracy :
±3%RH(at 25°C, 20%~80%)
±5.0%RH(at 25°C, <20%RH, >80%RH)

Note1 :

If you require more accurate reading,
This CO₂ monitor can be adjusted
according to your requirement.

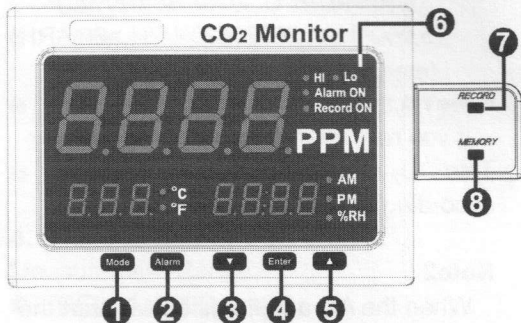
Note2 :

When the AC adaptor is off will start the
backup power only to provide Data Logger
use, the LED won't be lightened.

Note3 :

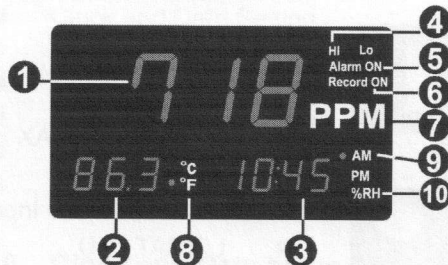
CO₂ sensor have ABC(Automatic
Baseline Correction) algorithm function,
this function every 7.5days to interval and
slowly corrects for any long-term drift
detected as compared to the expected
fresh air value of 400ppm CO₂

5. Instrument description



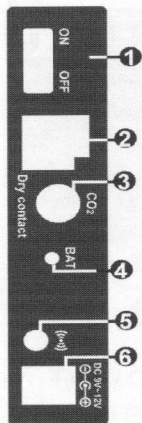
1. Time / Off Set Button.
2. Alarm Set Button.
3. Temp Unit (°C/°F) Button.
4. Time / Humidity Switch Button.
5. Data Hold Button.
6. LED Display.
7. Single Data Recode Button.
8. Read Recode Data Button.

6. LED description



1. CO₂ Reading.
2. Temp Reading.
3. Time / Humidity Reading.
4. HI / LO Alarm symbol.
5. Alarm On symbol.
6. Data logger On symbol.
7. CO₂ unit symbol.
8. Temp unit symbol.
9. Time unit symbol.
10. Humidity unit symbol.

7. Terminal description



1. Power Switch.
2. Dry Contact (MAX input DC24V/1A).
3. Calibration Gas Input
4. LO BAT LED.
5. Alarm Signal Output (2KHZ@3.3V).
6. Power Jack (DC9V~12V/1A).

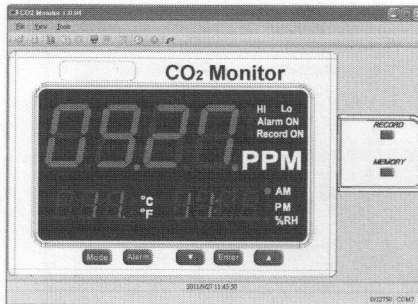
8. Disable/Enable Display

- **Enter** + **Alarm** to toggle Humidity Display on/off
- **Enter** + **▼** to toggle Temp Display on/off
- **Enter** + **▲** to toggle CO2 Display on/off

9. Mode Set Mode

- Clock and Date Setting.
- Buzzer ON/OFF.
- Temp Offset setting.
- Humidity Offset Setting.
- CO2 Offset Setting.
- Auto Recode Time Setting.

10. Clock and Date setup



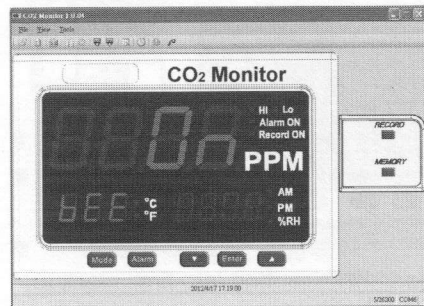
- Push **“Mode”** button into time clock and date setup.
- Push **“Alarm”** button to select option to adjust.

TENMARS

TM-186/TM-186D
TM-187/TM-187D

- Push “**▼**” or “**▲**” button to change the digit.
- Push “**Enter**” button to store the setup then exit the mode, If not push “**Mode**” button then exit clock and data setup.
- This meter clock shows 12 hour time originally, if you want to change 24 hours, push “**Enter**”.

11. Buzzer ON/OFF Setup



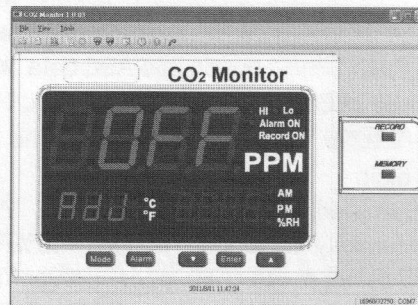
- Push “**Mode**” button into Buzzer ON/OFF setup.

TENMARS

TM-186/TM-186D
TM-187/TM-187D

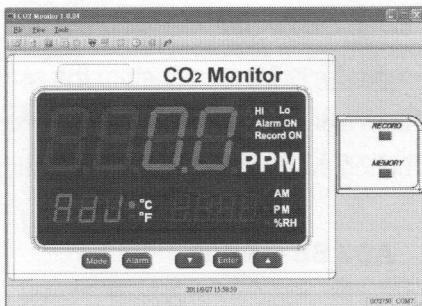
- Push “**▼**” or “**▲**” button to change setup ON or OFF.
- Push “**Enter**” button to store the setup then exit the mode, If not push “**Mode**” button then exit clock and data setup.

12. ADJ SET Setup



- Push “**Mode**” button into ADJ setup LED will display ADJ OFF. If you just reading alarm setup please push “**Mode**” button again to viewing set data. push “**Alarm**”

button enable ADJ.



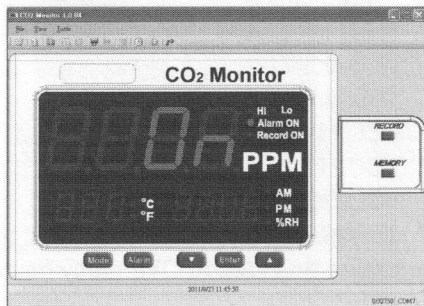
- Push "Mode" button into ADJ data set , LED display show ADJ data, "▼" or "▲" button to change the digit.
- ◇ Temp adj range : -10°C~+10°C
- ◇ Humidity adj range : 10%RH~+10%RH
- ◇ CO₂ adj range : -200ppm~+200ppm
- If you want to store this setup push the "Enter" button, If not push "Mode" button then exit alarm setup

13. Alarm Set Mode

- Alarm ON/OFF setting.
- Alarm Gap/Triggering setting.
- Temp Lo Alarm setting
- Temp HI Alarm setting
- Temp Gap setting
- Humidity Lo Alarm setting.
- Humidity HI Alarm setting.
- Humidity Gap setting.
- CO₂ Lo Alarm setting.
- CO₂ HI Alarm setting
- CO₂ Gap setting.
- ◇ Trigger : Alarm ON if value <= L or value >= H Alarm OFF : only manual OFF.
- ◇ Gap : Alarm ON if value <= L or value >= H.
- ◇ Alarm OFF : value > (L+G) or value < (H-G).

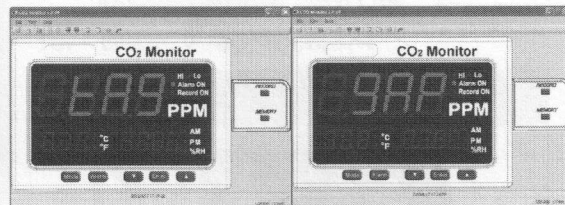
14. Alarm Setup

- Push “Alarm” button into alarm setup LED will display ALARM ON. Push “Alarm” button again LED will display ALARM OFF.

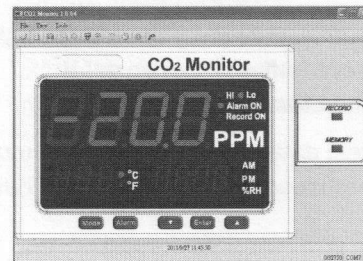


- Push “Mode” button into Regular Alarm Setting (The user has to manually switch on/off the alarm even though the current reading value has dropped below your alarm settings) which “tAg” will be shown on the LED display or Alarm Gap Value settings (The meter will automatically switch on/off the alarm when the current reading value

has dropped below your alarm settings) which “gAP” will be shown on the LED display.

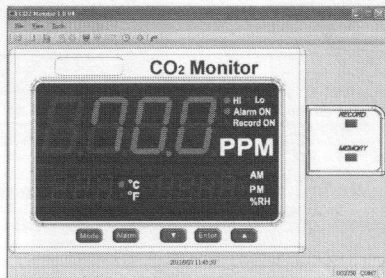


- Push “Alarm” button to change Regular Alarm Setting to Alarm Gap Value settings.
- Push “Mode” button into alarm range setup, LED display show “LO ALARM ON” set LOW Alarm, Push “▼” or “▲”, button to change the digit.



TENMARS TM-186/TM-186D TM-187/TM-187D

- Push “Mode” button into alarm range setup”, LED display show “ HI ALARM ON ”, set HI Alarm, Push “▼” or “▲” button to change the digit.




- Push “Mode” button into alarm Gap value settings, Push “▼” or “▲” button to change the digit.
- If you want to store this setup push the “Enter” button, If not push “Mode” button then exit alarm setup.
- If test data exceed set range, buzzer were bleep, at this time socket output

TENMARS TM-186/TM-186D TM-187/TM-187D

sin wave signal at 2000Hz, terminal blocks were short.

15. Battery replacement

	WARNING
	If the LO Battery LED were turn on, please replace the battery immediately.

- Turn off the instrument.
- Open the battery cover and remove the battery.
- Replace with four-9V NEDA 1604, IEC 6F22 or JIS 006P size battery.
- Install the battery cover.

16. Single data memory

Push Record button each time to store the display reading and memory location in memory.

17. Viewing logged Data

Push Memory button into view logged data mode , push Memory button again exit view logged data mode In view logged data mode push “Mode” button reading stores time , push “▼” button to change the temp unit , Push “Enter” or “▲” button to change view logged data

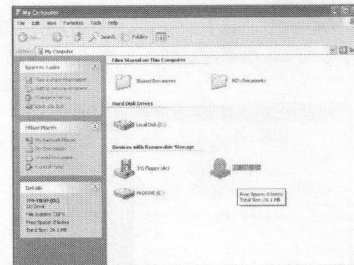
18. Auto Stores Data

- Push “Mode” button into time clock and date setup.
- Push “Mode” button again into auto stores time clock setup.
- This time LED display shows auto stores data time , you can push “Alarm” to change time unit.
(Max auto stores data time :23hour 59min 59sec)

- Push “▼” or “▲” button to change the digit.
- Push “▼” or “▲” button to change the digit.
- If you want to store this setup push “Enter” button, If not push “Mode” button then exit auto stores data time setup.

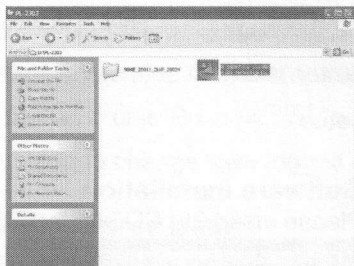
19. Software installation

- Please insert the CD into the PC.



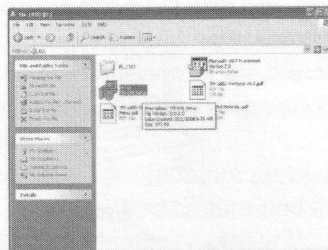
TENMARS TM-186/TM-186D TM-187/TM-187D

- Please select the USB driver that will be installed, such as E:\ PL-2303 Driver Installer.exe (windows 2000 SP4/windows XP SP2), or go to "<http://www.prolific.com.tw/eng/download.asp?id=31>" "download new driver."



TENMARS TM-186/TM-186D TM-187/TM-187D

- Select the SETUP.EXE i.e., E:\CO2 Monitor\SETUP.EXE and installs the desktop icon



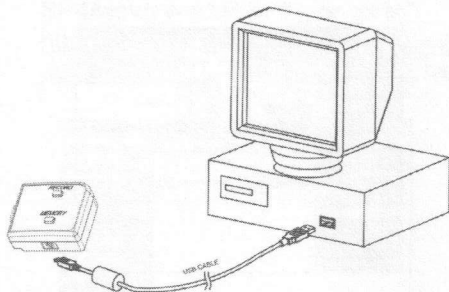
- Tack out the CD from the PC after completed the installation of the desktop icon.



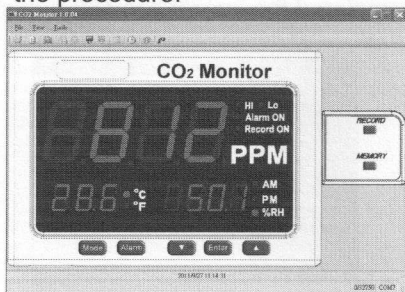
TENMARS

TM-186/TM-186D
TM-187/TM-187D

- Use the USB cable to connect the meter and computer according to the drawing.



- Select the desktop icon and click twice on left key of the mouse to run the procedure.



TENMARS

TM-186/TM-186D
TM-187/TM-187D

20. Maintenance

- Do not use the meter in an environment with severe change; do not store the unit in an environment with high temperature, high humidity, and high vibration.
- Take the battery off if the meter has not been used for a long period of time.
- The Diode temperature probe is used to measure temperature and the capacitive humidity sensor is used to measure take humidity.
- The thermocouple and humidity sensor will start aging under the influence of oxidation, reduction, corrosion, pollution, vaporization, diffusion or other metallurgy. The aging process will affect its precision seriously.
- Cleaning and inspection of temperature probe:
The smoke, coal, dust, grease attached on the protective tube of

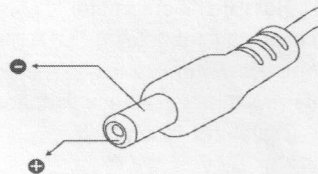
temperature probe will slow down the heat conduction of the thermocouple and cause measuring error. Therefore, it should be cleaned periodically. The metal coating of thin thermocouple should be replaced properly upon the occurrence of corrosion.

- **Cleaning and inspection of humidity sensor:**

The smoke and dust attached on the humidity sensor will slow down the function of humidity sensor and cause measuring error. Therefore, it should be cleaned periodically. Blow off the dust with mild compressed air instead of water or alcohol. The aluminum plate inside the humidity sensor should be replaced upon the occurrence of corrosion.

21. External DC Power

- External AC to DC adapter: Voltage $9V_{DC}$ (8~14 V_{DC} Max)
- Socket : pin Positive, Ground Casing External.
- Diameter 5.5mm internal Diameter 2.0 mm.



22. End of life



Caution: this symbol indicates that equipment and its accessories shall be subject to a separate collection and correct disposal.