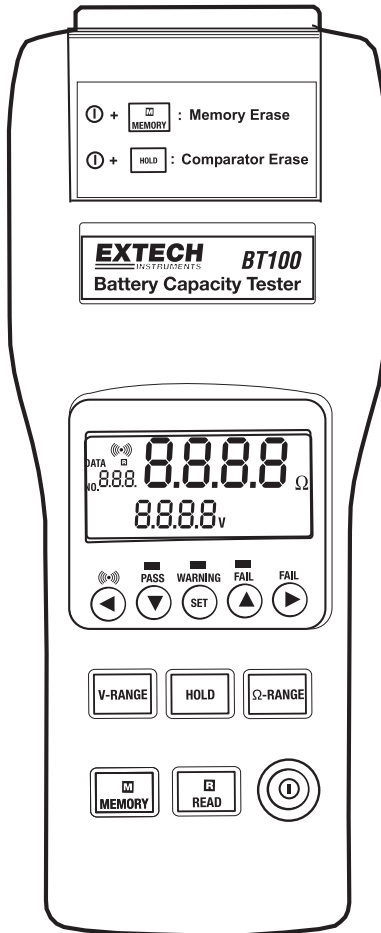


# Battery Capacity Tester

Model BT100



## ***Introduction***

---

Thank you for selecting the Extech Model BT100. The Battery Tester is designed for measuring the internal resistance and output voltage of batteries including lead storage cells, nickel-cadmium batteries, lithium-ion batteries, and nickel-metal hydride batteries.

This device is shipped fully tested and calibrated and, with proper use, will provide years of reliable service. Please visit the Extech Instruments website ([www.extech.com](http://www.extech.com)) to check for the latest version of this User Guide. Extech Instruments is an ISO-9001 certified company.

## ***Features***

---

- Accurate results are achieved using a four-terminal measurement method that eliminates lead and contact resistance.
- 1kHz test current with up to 10 $\mu\Omega$  resistance resolution.
- Dual display simultaneously indicates the internal resistance and the battery voltage.
- Comparator function with storage of up to 99 sets of resistance and voltage data for battery deterioration characterization.
- Pin type and alligator type 4-terminal Kelvin leads for quick and accurate resistance measurements.
- Memory capacity to store up to 999 (manual datalogging) or 9600 (automatic datalogging) data points.
- Supplied RS232 PC port and Windows compatible software.

## ***Safety***

---

### **International Safety Symbols**



This symbol, adjacent to another symbol or terminal, indicates the user must refer to the manual for further information.



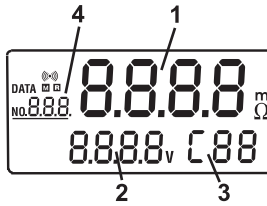
This symbol, adjacent to a terminal, indicates that, under normal use, hazardous voltages may be present



Double insulation



## Display Description



1. Measured resistance reading (or High/Low resistance limit when setting up the comparator)
2. Measured voltage reading (or High/Low voltage limit when setting up the comparator)
3. The comparator set number (there are 99 sets total)
4. The memory location for manually logged data.

### Symbols:

mΩ: Milliohm (resistance)

V: Voltage

[HOLD]: Hold function (display freeze)

[COMP]: Comparator function enabled

[BT]: Low-Battery

[Beeper icon]: Beeper enabled

DATA [R]: Manual datalogging enabled

[M]: Continuous datalogging enabled (flashes each time data is stored)

INTV: Interval time setting for the continuous datalogging function. (1 to 255 seconds)

[COMP.SET]: Comparator settings mode

HIGH: High limit setting (threshold) for the comparator

LOW: Low limit setting (threshold) for the comparator

## LED Test Status Indicators

PASS (green LED): Battery is good (within the tolerances of the comparator's preset limits)

WARNING (yellow LED): Battery is beginning to deteriorate

FAIL (red LED): Battery has failed

The LED status indications listed above are active when the High/Low comparator limits for internal resistance and the comparator threshold value for voltage are properly configured.

# Operation

## Preparation and Safety

The following safety information must be observed to ensure maximum personal safety during the operation of this tester.

- To avoid electric shock when replacing the batteries: Disconnect the test leads from the device under test before attempting to replace the batteries.
- Check the battery polarity carefully when inserting the batteries. Refer to the battery replacement section (under Maintenance) later in this User Guide.
- Be sure to dispose of used batteries properly.

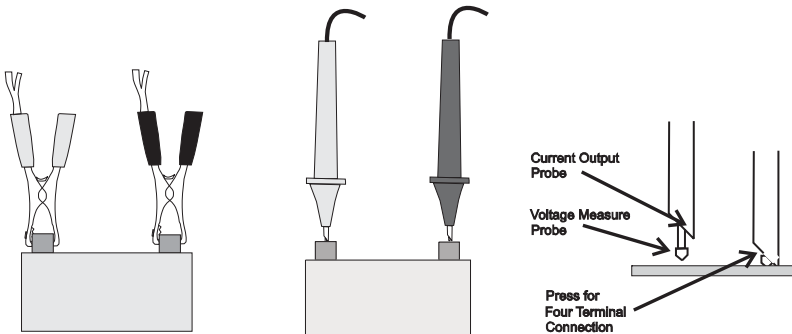


## WARNING

- Do not attempt to measure DC voltage exceeding 50V. Do not attempt to measure AC voltages; this could result in personal injury or damage to the unit.
- To avoid personal injury and/or damage to the unit, do not attempt to measure the voltage of a generator. This will result in an AC voltage being applied to the voltage generating output terminals.
- After measuring a high voltage battery, and before continuing to measure a low voltage battery, short the measurement leads by touching the lead tips together. This will discharge the DC-elimination capacitor (connected across the leads); otherwise a dangerous condition can exist where an excessive voltage may be applied to the low voltage battery.


## Test Leads

Two sets of test leads are supplied with the meter. Both sets provide four (4) terminal Kelvin connections which eliminate lead resistance and probe contact resistance. The application at hand will dictate whether the alligator type or the press-probe type should be used.



## Testing Procedure

Connect the red test lead to the “+” jack and the black test lead to the “-” jack.

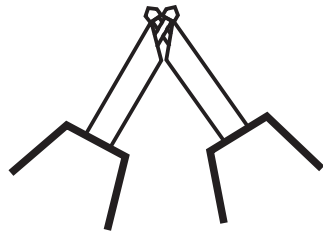
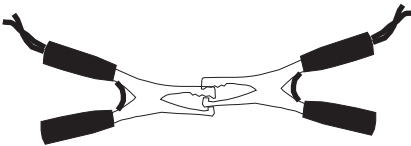
1. Press the Power  button to switch the tester ON.
2. Use the V-RANGE or  $\Omega$ -RANGE buttons to select the desired Voltage or Resistance range.
3. Perform a REL Zero adjustment (see next section) each time the range is changed.
4. Connect the red test probe to the positive battery terminal, and the black test probe to the negative battery terminal.
5. Read the battery's internal resistance and the DC voltage directly on the meter's display.

Note: When the measured DC voltage or battery internal resistance value is over range, “OL” is displayed. When the AC test current faults “- - -” will be displayed.

## REL Adjust (ZERO)

The **REL** function zeros the selected range. The reading displayed when the REL button is pressed will be taken as zero and will be used to ‘offset’ subsequent measurements.

1. Short the four (4) probe tips of the red and black test leads as shown in the accompanying diagrams.
2. Press the REL button and the display will show the ‘R’ icon and the resistance and voltage values will zero.
3. Connect the test leads to the battery to be tested.
4. The REL button must be pressed each time the range of the meter is changed, after the test leads are swapped, or after switching between resistance and voltage tests.



## Comparator (99 sets)

The comparator function compares the measured values with preset High and Low limit values for internal resistance and voltage level, and determines the range that the measurement should fall into. Then, according to the following conditions, switches ON the corresponding LED, and sounds an audible alert as shown in the table below for the WARNING and FAIL conditions.

### Comparator Settings

1. Press and hold the **SET** button for 2 seconds, the display will show **COMP.SET** indicating the comparator mode is enabled.
2. Use the **▲** or **▼** button to change the comparator number from 01 up to 99.
3. Use the **V-RANGE** or **Ω-RANGE** button to set the desired voltage and resistance measurement range.
4. Press **▶** once, the **LOW** icon and the left two digits of the low limit resistance will be flashing. (Use the **▲** & **▼** buttons to select the desired value.)
5. Press **▶** once, the right two digits of the low limit resistance will be flashing. (Use the **▲** and **▼** buttons to select the desired value.)
6. Press **▶** once, the **HIGH** icon and the left two digits of the high limit resistance will be flashing. (Use the **▲** and **▼** buttons to select the desired value.)
7. Press **▶** once, the right two digits of the high limit resistance will be flashing. (Use the **▲** and **▼** buttons to select the desired value.)
8. Press **▶** once, the left two digits of the threshold voltage will be flashing. (Use the **▲** and **▼** buttons to select the desired value.)
9. Press **▶** once, the right two digits of the threshold voltage will be flashing. (Use the **▲** and **▼** buttons to select the desired value.)
10. Repeat step 2 to step 9 to set the next comparator number.
11. Press SET again to exit the comparator setting mode.

### Comparator Table

Resistance Voltage		Low limit resistance		High limit resistance	
		Lo	Middle	Hi	Hi
Comparison Value	Lo	WARNING Beeper	WARNING Beeper	FAIL Beeper	
	Hi	Pass	WARNING Beeper	FAIL Beeper	

### Comparator Start / Stop Controls

1. Press **SET** to activate the comparator function, the **COMP** indication will appear on the display. The comparator will operate once measurements are taken.
2. Use the **▲** and **▼** buttons to select the desired comparator number. The selected comparator number remains in memory even when the power is switched off.
3. Press **•••** to set the audible alert ON, the **•••** indication will appear on the display, and the audible tone will sound with a WARNING or FAIL result. Press **•••** again to disable the audible alert.
4. Press SET again to switch off the comparator function.

## Datalogging

---

### Manual Data Logging (999 sets)

1. Log readings one at a time to the internal memory by pressing the **M** **MEMORY** button. "DATA M NO XXX" will appear on the LCD for one second to indicate the memory location.
2. Press **R** **READ** button to review logged readings. The display will show "DATA R NO XXX".
3. Use the **▲** and **▼** buttons to scroll the logged readings.
4. Press **R** **READ** again to discontinue viewing the logged readings.

### Continuous Data Logging

1. Press **HOLD** for 2 seconds and the display will show the **INTV** icon.
2. Use the **▲** or **▼** button to select the desired interval time (datalogging sample rate) from 1 second to 255 seconds.
3. Press **SET** to exit the interval time setting mode.
4. Press and hold **M** **MEMORY** for 2 seconds to enter the continuous (automatic) logging mode, the display will show the **M** icon.
5. The **M** will flash each time a reading is stored.
6. Press **M** **MEMORY** again to exit the continuous datalogging mode.
7. Data stored using the continuous datalogging mode cannot be read directly on the tester's display, it must be downloaded to a PC using the supplied software.

### Clearing the Datalogger Memory

When the internal memory is full, the **Full** icon will appear on the display and datalogging will stop.

1. Press **I** to switch OFF the tester.
2. Press and hold the **MEMORY** button, and while continuing to hold the **MEMORY** button, press the **I** button. The display will show the **CLr** icon and all datalogged readings will be cleared from memory.



## Specifications

Resistance measurement method	Four (4) terminal Kelvin connections
A/D conversion	Dual slope
Displays	Dual LCD for measurements and programming icons Three (3) test status LEDs
Datalogger Sampling rate	1 to 255 seconds (interval time between logged readings)
Open-circuit terminal voltage	3.5Vpp max
Input over range	"OL" display
Low battery indication	<b>BT</b> display
Test current fault detect	"- - -" display
Auto power off	After approximately 30 minutes
Zero (Relative) function	Circuit offset voltage is displayed as 0V
Hold function	Display freezes
Audible Alarm function	Audible alert for Warning and Failure conditions (can be set ON or OFF)
Comparator settings	Resistance High/Low limits and Voltage threshold point
Number of comparator configurations	99 sets
Comparator output	Test status LEDs for Pass (green), Warning (yellow), and Fail (red) results (audible tone for Warning and Fail conditions)

		Resistance		
		Lo	IN	Hi
Voltage	Lo	Warning	Warning	Fail
	Hi	PASS	Warning	Fail

Manual Datalogging memory	999 sets can be stored in meter's internal memory
Continuous (automatic) Datalogging	9600 sets can be stored in meter's internal memory
Operating conditions	32 to 104°F (0° to 40°C) 80%RH (non-condensing)
Storage conditions	14 to 122°F (-10° to 50°C) 80%RH (non-condensing)
Power source	Six (6) 'AA' 1.5V batteries; Optional 9V AC adaptor
Maximum power consumption	1.0VA
Maximum continuous operation	7 hours approx.
Altitude	2000m max.
Dimensions	9.8 x 3.9 x 1.7" (250 x 100 x 45mm)
Weight	1.1 lbs. (500g) approx. (including batteries)
Accessories	Test Leads and batteries
Optional equipment	AC adaptor (9V output)

## Electrical Specifications

To ensure accuracy the ambient temperature should be  $23^{\circ}\text{C} \pm 5^{\circ}$  with a humidity of 80% RH (maximum) non-condensing. In addition, perform a Zero adjustment after each range change.

### Resistance measurements

Temperature coefficient:  $(\pm 0.1\% \text{ rdg} \pm 0.5 \text{ digits})/^{\circ}\text{C}$

Measurement current frequency:  $1\text{KHz} \pm 10\%$

Measurement burden voltage:  $1.5\text{mVAC}$

Range	Resolution	Measurement current	Accuracy
40m $\Omega$	10 $\mu\Omega$	37.5mA approx.	$\pm(1\% \text{ reading} \pm 10 \text{ digits})$
400m $\Omega$	100 $\mu\Omega$	3.75mA approx.	
4 $\Omega$	1m $\Omega$	375 $\mu\text{A}$ approx.	
40 $\Omega$	10m $\Omega$	37.5 $\mu\text{A}$ approx.	

### Voltage Measurements

Temperature coefficient:  $(\pm 0.1\% \text{ rdg} \pm 0.5 \text{ digits})/^{\circ}\text{C}$

Range	Resolution	Accuracy
4V	1mV	$\pm(0.1\% \text{ reading} \pm 6 \text{ digits})$
40V	10mV	

Maximum Input Voltage: 50VDC maximum

No AC voltage input permitted

Maximum between input terminals and ground: 60VDC/AC



**DANGER**

Do not exceed the maximum permissible input voltage to the measurement terminals. This could result in personal injury and/or damage to the unit.

## ***Maintenance***

---

### **Cleaning**

1. Repair or service not covered in this User Guide should be performed by qualified personnel only.
2. Periodically wipe the case with a dry cloth; do not use abrasives or solvents.

### **Battery Check & Replacement**

The **BT** symbol will be displayed when the batteries need replacement.

1. Disconnect the test leads from the meter and from devices under test
2. Switch OFF the power to the tester
3. Open the battery compartment cover with a screw driver
4. Replace the batteries observing polarity
5. Replace and secure the battery cover

### **Battery Safety Reminders**

- Please dispose of batteries responsibly; observe local, state, and federal regulations with regard to battery disposal at all times.
- Never dispose of batteries in a fire. Batteries may explode or leak.
- Never mix battery types. Always install new batteries of the same type.

## PC Software

### Overview

The supplied software combines **data acquisition** and **datalogger** functionality.

**Data acquisition** is the process of storing readings on a PC while the meter is connected to the PC and while the meter is actively taking measurements.

When **Datalogging**, the meter is taking and storing readings in its own internal memory while disconnected from the PC. Later, the meter can be connected to the PC to offload the stored data.

### Installing the Windows Application Program

1. Connect the BT100 to the serial PC port using the supplied interface cable.
2. Place the supplied software CD in the PC CD-ROM drive
3. Wait for "Autorun" to start and follow the on-screen instructions
4. If "Autorun" does not start, click on "Start" then "Run". Type the drive letter of the CD-ROM and :\\VB\\Disk1\\Setup.exe and click OK (To install the LabVIEW version, type the drive letter and :\\LV\\installer\\Setup.exe and click OK).
5. Change the path if necessary or choose to install the program to its default location.
6. Launch the program by double clicking the program in the location where it was saved during installation.
7. Do not run the supplied software until the meter is properly connected to the PC.

### Software Operation

Click "Start" on the Start menu, click "Programs" and then click on "BatTester" to launch the program. The COM Port screen will appear. Select the COM Port and then click OK.

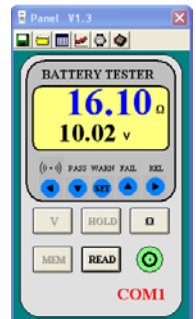


The Battery Tester main screen will appear. On the lower right side of the screen, "COM XX" will appear if a connection has been accomplished (where XX is the COM Port number). "NO COM" will appear if there is no connection.

The function of the Main screen icons are:

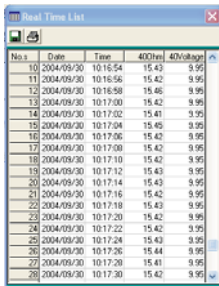


1. Opens the "Save As" dialog box to save data to a new file.
2. Opens the "Open" dialog box to open a saved file.
3. Opens the "Real Time List" display box for data acquisition mode.
4. Opens the "Real Time Graph" showing voltage and resistance data.
5. Opens the "Real Time Sampling Rate" dialog box for datalogging.
6. Opens the "Data Logger" box and downloads the data from meter to PC.
7. Opens the "Manual Records" box and downloads the data from meter to PC.

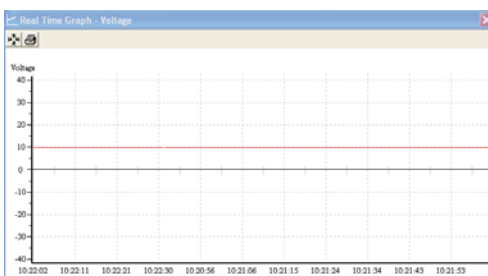


## Data Acquisition Mode

In the data acquisition mode, the meter is connected to the computer while taking readings. At the same time the readings are taken, they are displayed and stored on the computer. The readings can be displayed as a List, a Voltage graph or a Resistance graph.



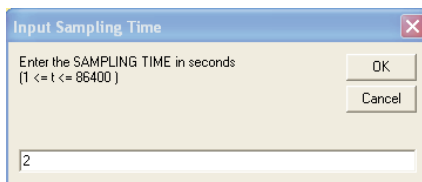
No.	Date	Time	400Hz	40Vrms	OK
10	2004/09/30	10:16:54	15.43	9.95	
11	2004/09/30	10:16:56	15.42	9.95	
12	2004/09/30	10:16:58	15.46	9.96	
13	2004/09/30	10:17:00	15.42	9.96	
14	2004/09/30	10:17:02	15.41	9.95	
15	2004/09/30	10:17:04	15.45	9.95	
16	2004/09/30	10:17:06	15.42	9.95	
17	2004/09/30	10:17:08	15.42	9.95	
18	2004/09/30	10:17:10	15.42	9.95	
19	2004/09/30	10:17:12	15.43	9.95	
20	2004/09/30	10:17:14	15.43	9.95	
21	2004/09/30	10:17:16	15.42	9.95	
22	2004/09/30	10:17:18	15.43	9.95	
23	2004/09/30	10:17:20	15.42	9.96	
24	2004/09/30	10:17:22	15.42	9.95	
25	2004/09/30	10:17:24	15.43	9.95	
26	2004/09/30	10:17:26	15.44	9.96	
27	2004/09/30	10:17:28	15.41	9.95	
28	2004/09/30	10:17:30	15.42	9.95	



## Sampling Rate Setting for Data Acquisition Mode

The sampling rate for the data acquisition mode can be set from 1 reading per second to 1 reading every 86,400 seconds (1 sample every 24 hours).

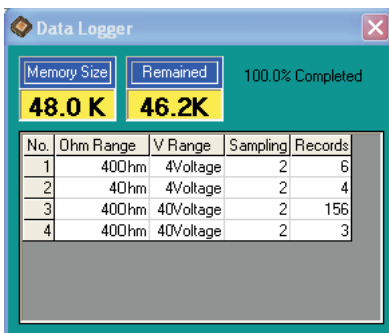
Note: This sampling rate setting is for the data acquisition mode only. For datalogger mode, the sample rate is set using the meter's front panel controls as explained in the hardware User Guide supplied with the meter.



The dialog box is titled "Input Sampling Time" and contains the text: "Enter the SAMPLING TIME in seconds (1 <= t <= 86400)". There are "OK" and "Cancel" buttons. A text input field contains the number "2".

## Datalogger Mode

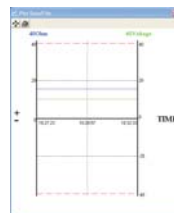
The meter's internal datalogger memory stores readings in files. Each file is created when a datalogging session is started and then stopped using the MEMORY button (described in the hardware User Guide supplied with the meter). The Datalogger screen lists each file (1, 2, 3, etc.) along with the ohm range, voltage range, sampling time and the number of data records stored in the file.



Click on one of the numbered files and the “Input Starting Time” box appears. Enter the exact time and date of the first reading in the file. The software will then put a time and date stamp on all of the records in the file. The data will automatically download at this time.

The recalled data can be viewed as a list or graph and can be saved as file.

No.	Date	Time	40hm	40Voltage
1	2004/09/02	10:27:23	15.46	9.94
2	2004/09/02	10:27:25	15.43	9.94
3	2004/09/02	10:27:27	15.49	9.94
4	2004/09/02	10:27:29	15.46	9.94
5	2004/09/02	10:27:31	15.47	9.94
6	2004/09/02	10:27:33	15.48	9.97
7	2004/09/02	10:27:35	15.50	9.94
8	2004/09/02	10:27:37	15.42	9.94
9	2004/09/02	10:27:39	15.48	9.94
10	2004/09/02	10:27:41	15.50	9.94
11	2004/09/02	10:27:43	15.45	9.94
12	2004/09/02	10:27:45	15.46	9.94
13	2004/09/02	10:27:47	15.43	9.94
14	2004/09/02	10:27:49	15.50	9.97
15	2004/09/02	10:27:51	15.49	9.97
16	2004/09/02	10:27:53	15.50	9.97
17	2004/09/02	10:27:55	15.47	9.94
18	2004/09/02	10:27:57	15.45	9.97
19	2004/09/02	10:27:59	15.48	9.94



## READ Button

Data stored manually (single press of the MEMORY button on the meter) can be downloaded by clicking the READ button. The data can be viewed as a list, saved in a file, or printed.

	Resistance	Voltage
1	----	00.01
2	----	00.01
3	----	-0.000
4	----	0.000
5	----	0.000
6	----	-0.000
7	----	-0.001
8	----	-0.001
9	15.330hm	09.93
10	15.330hm	09.93
11	15.350hm	09.93
12	15.340hm	09.93
13	15.340hm	09.93
14	15.350hm	09.93
15	15.340hm	09.93
16	15.360hm	09.93
17	15.360hm	09.93
18	15.350hm	09.93
19	15.340hm	09.93

## Spreadsheet import

Saved files may be imported into a spreadsheet. In the spreadsheet import wizard select “delimited”, “TAB” and (“) as the text qualifiers.

## Warranty

**EXTECH INSTRUMENTS CORPORATION** (a FLIR company) warrants this instrument to be free of defects in parts and workmanship for **one year** from date of shipment (a six month limited warranty applies to sensors and cables). If it should become necessary to return the instrument for service during or beyond the warranty period, contact the Customer Service Department for authorization. Visit our website [www.extech.com](http://www.extech.com) for contact information. A Return Authorization (RA) number must be issued before any product is returned to Extech. The sender is responsible for shipping charges, freight, insurance and proper packaging to prevent damage in transit. This warranty does not apply to defects resulting from action of the user such as misuse, improper wiring, operation outside of specification, improper maintenance or repair, or unauthorized modification. Extech specifically disclaims any implied warranties or merchantability of fitness for a specific purpose and will not be liable for any direct, indirect, incidental or consequential damages. Extech's total liability is limited to repair or replacement of the product. The warranty set forth above is inclusive and no other warranty, whether written or oral, is expressed or implied.

### Calibration and Repair Services

Extech offers repair and calibration services for the products we sell. Extech also provides NIST certification for most products. Call the Customer Service Department for information on calibration services available for this product. Extech recommends that annual calibrations be performed to verify meter performance and accuracy.

**Support lines: U.S. 877-439-8324, Intl. +1 603-324-7800**

Technical support: Option 3; E-mail: [support@extech.com](mailto:support@extech.com)

Repair & Returns: Option 4; E-mail: [repair@extech.com](mailto:repair@extech.com)

**Product specifications subject to change without notice**

Visit our website: [www.extech.com](http://www.extech.com)

Extech Instruments Corporation, 9 Townsend West, Nashua, NH 03063

ISO 9001 Certified since 1995

**Copyright © 2012 Extech Instruments Corporation (a FLIR company)**

All rights reserved including the right of reproduction in whole or in part in any form

## Garantie

**EXTECH INSTRUMENTS CORPORATION (une société FLIR)** garantit que cet instrument est exempt de défauts de fabrication pendant une période d'un an à compter de la date de livraison (une garantie limitée de six mois est applicable pour les sondes et les câbles). S'il s'avère nécessaire de retourner l'instrument pour un dépannage durant ou après la période de garantie, contactez le service à la clientèle pour obtenir une autorisation de retour. Visitez notre site Web au [www.extech.com](http://www.extech.com) pour des informations. Un numéro d'autorisation de retour (AR) doit être émis avant que tout produit puisse être retourné à Extech. L'expéditeur est responsable des frais d'expédition, de transport, d'assurance et d'emballage adéquat afin de prévenir les dommages durant le transit. Cette garantie ne s'applique pas aux défauts résultant d'une action de l'utilisateur tels un mauvais usage, un câblage adéquat, un fonctionnement hors des spécifications, un entretien ou un dépannage inadéquat, ou une modification non autorisée. Extech décline précisément toute garantie implicite ou garantie marchande ou d'adaptation à un usage particulier et ne pourra être tenu responsable d'aucun dommage direct, indirect, accidentel ou consécutif. La responsabilité totale d'Extech se limite à la réparation ou au remplacement du produit. La garantie énoncée ci-dessus est inclusive et aucune autre garantie, qu'elle soit écrite ou orale, n'est stipulée ou sous-entendue.

### Service de calibrage et de réparation

Extech offre un service de calibrage et de réparation pour toute sa gamme de produits. Extech fournit également une certification NIST pour la plupart de ses produits. Contactez le Service Clients pour de plus amples informations concernant les services de calibrage disponibles pour ce produit. Extech vous recommande de procéder à un test de calibrage annuel afin de vérifier régulièrement les performances et la précision de votre appareil.

**Appui de produit U.S. 877-439-8324, Intl. +1 603-324-7800**

Service d'assistance technique: l'option 3, email : [support@extech.com](mailto:support@extech.com)

Réparations et retours : l'option 4, email : [repair@extech.com](mailto:repair@extech.com)

**Spécifications produit sujettes à modifications sans préavis**

[www.extech.com](http://www.extech.com)

Extech Instruments Corporation, 9 Townsend West, Nashua, NH 03063

ISO 9001 Certified since 1995

**Copyright © 2012 Extech Appareils Corporation (une société FLIR).**

Tous droits réservés, y compris le droit de reproduction, en tout ou en partie, sous quelque forme que ce soit.

## Garantía

---

**EXTECH INSTRUMENTS CORPORATION (una empresa FLIR)** garantiza este instrumento libre de defectos en partes o mano de obra durante **un año** a partir de la fecha de embarque (se aplica una garantía limitada a seis meses para los cables y sensores). Si fuera necesario regresar el instrumento para servicio durante o después del período de garantía, llame al Departamento de Servicio a Clientes para autorización. Visite nuestra página en Internet [www.extech.com](http://www.extech.com) para Información de contacto. Se debe otorgar un número de Autorización de Retorno (RA) antes de regresar cualquier producto a Extech. El remitente es responsable de los gastos de embarque, flete, seguro y empaque apropiado para prevenir daños en tránsito. Esta garantía no se aplica a defectos resultantes de las acciones del usuario como el mal uso, alambrado equivocado, operación fuera de las especificaciones, mantenimiento o reparación inadecuada o modificación no autorizada. Extech específicamente rechaza cualesquier garantías implícitas o factibilidad de comercialización o aptitud para cualquier propósito determinado y no será responsable por cualesquier daños directos, indirectos, incidentales o consecuentes. La responsabilidad total de Extech está limitada a la reparación o reemplazo del producto. La garantía precedente es inclusiva y no hay otra garantía ya sea escrita u oral, expresa o implícita.

### Servicios de reparación y calibración

Extech ofrece servicios completos de reparación y calibración para todos los productos que vendemos. Extech además provee certificación NIST para la mayoría de los productos. Llame al Departamento de Servicio al Cliente para solicitar información de calibración para este producto. Extech recomienda realizar calibraciones anuales para verificar el desempeño y precisión del medidor.

**Ayuda de producto: U.S. 877-439-8324, Intl. +1 603-324-7800**

Soporte Técnico Opción 3, e-mail [support@extech.com](mailto:support@extech.com)

Reparación / Retornos: Opción 4, e-mail [repair@extech.com](mailto:repair@extech.com)

**Las especificaciones del producto están sujetas a cambios sin aviso**

Visite nuestro sitio web [www.extech.com](http://www.extech.com)

Extech Instruments Corporation, 9 Townsend West, Nashua, NH 03063

ISO 9001 Certified since 1995

**Copyright © 2012 Extech Instruments Corporación (una empresa FLIR)**

Reservados todos los derechos, incluyendo el derecho de reproducción total o parcial en cualquier medio.